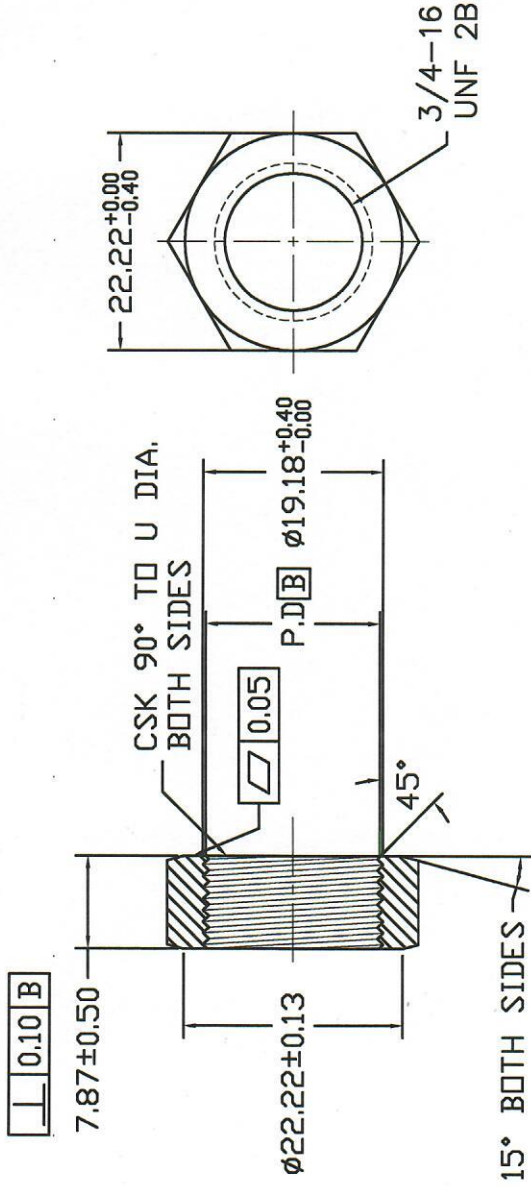
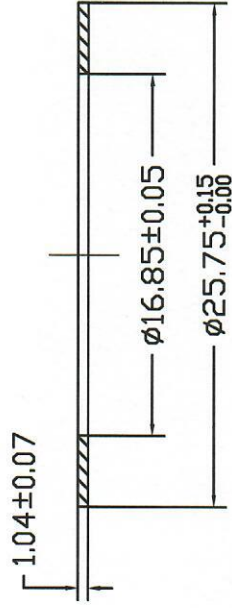


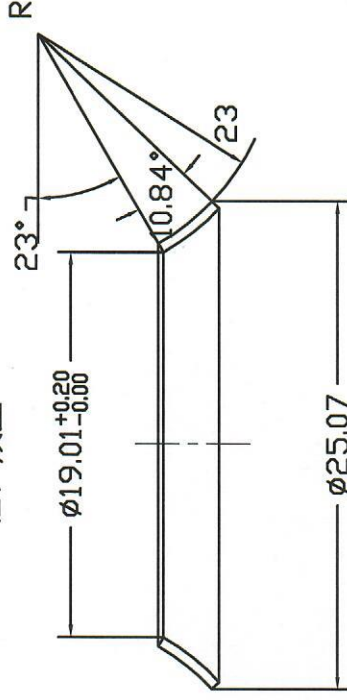
REV 更改号	DATE 日期	REVISION DETAILS 更改内容	APPD 审核并批准
A	Mar. 30, 2020	Drawing Update	



(1) 落料



(2) 成型



UNLESS SPECIFIED  
 ALL DIMENSIONS IN mm,  
 MACHINED SURFACES Ra=3.2um,  
 ANGLE TOLERANCES ±5°,  
 Other tolerance except angles,  
 in accordance with  
 GB/T1804-2000(ISO2768-1)-m  
 and GB/T1184-1996(ISO2768-2)-m

其它事项,  
 图示尺寸单位为mm,  
 未注机加工表面粗糙度 Ra=3.2um,  
 未注角度公差 ±5°,  
 其它未注公差 (除角度外) 均按:  
 GB/T1804-2000(ISO2768-1)-m 和  
 GB/T1184-1996(ISO2768-2)-m

Zhejiang Gaocheng Autoparts Co., Ltd

PART No 零件名	4601-06-08NW□ 配件	APPD: 批准	DRN: Sun Jiaohuan 制图 20.03.30
SCALE: NTS		DATE: 日期	CHK: Li Jumbiao 审核 20.03.30

MATERIAL Chinese steel 45

FINISH

Remove all sharp edges, burrs, slivers and swarf, break all edges 0.127-0.254mm.  
 ZINC PLATING WITH 8um MICRONS MINIMUM PLATING THICKNESS AND TRIVALENT CHROMATE PASSIVATION  
 AND WITHSTAND 96 HRS TO WHITE / 144 HS TO RED RUST IN SALT SPRAY TEST.

镀锌, 三价铬钝化, 银白色, 盐雾试验96小时无白锈, 144小时无红锈, 镀锌层厚度大于8um,  
 去除所有毛刺, 铁屑等残留物, 锐边倒钝0.127-0.254mm.